



pilot club of tallahassee – friendship & service – since 1935

events

october

- oct 2010 **Pecan Sales Begin!**
- oct 16 **Founder's Day Picnic**
Charlotte Edenfield's Home, 12:30pm
- oct 18 **Founder's Day**

november

- nov 5-7 **Florida District Fall Council**
Ocala Hilton, Ocala, Florida
- nov 7 **Forget-Me-Not Walk**
St. Paul's United Methodist Church, Tallahassee, Florida
- nov 8 **Regular Meeting**
6:30pm Regions Bank

december

- dec 2010 **Salvation Army Sharing Tree**
TBA
- dec 7 **10,000 Villages Fundraiser**
6-8:00pm, Market Square
- dec 13 **Holiday Party**
TBA

club notables

<i>Claire Mikko</i>	President
<i>Pam Schilling</i>	President-Elect
<i>Linda Summerlin</i>	Vice President
<i>Jane Furlong</i>	Secretary
<i>Karol Schneider</i>	Treasurer
<i>Jane Parker</i>	Immediate Past-President/Director
<i>Yvonne Salfinger</i>	Director
<i>Belinda Mizell</i>	Director
<i>Pam Manley</i>	Editor

Meetings are held each 2nd Monday at 6:30 p.m. at the Regions Bank on Centerville Road. Our focus is on brain related disorders, brain safety, youth projects and Pilot scholarship houses.



visit us on the web at:
www.tallahasseepilot.org

about

international news

Submitted by Claire Mikko



HISTORY

The original 501(c)(3) PI Charitable and Educational Foundation served solely as a means of collecting tax-deductible gifts. It did not take long for the governing body of Pilot International to see that so much more could be accomplished...

- The Pilot International Foundation was founded in 1975, with Frances Keever as Chairman.
- The first Board of Trustees saw the Foundation as:
 - a "vehicle to strengthen Pilot Club projects"
 - a way to spread the image of Pilot as an organization of friendship and service
 - the identifying label by which Pilot is known and recognized
- The Board of Trustees' plans were to use the Foundation to accomplish broader goals, to enlarge the organization's image as a dynamic force for good, and to broaden Pilot's influence collectively.

The first individual to reach the PIF Honor Wall by contributing \$10,000 or more was Hazel Bales of Jeffersonville, Indiana. The first club was the Pilot Club of El Centro, California, and the first District was the Georgia District.

Continued on page 3...

president's corner

October 2010

October is a great time of year. The temperature has finally cooled down which means outside activities are much more pleasant. On September 3rd, we presented The Alzheimer's Project with a \$500 check, to be used to buy equipment and supplies for their waiting list clients. September 9th, we met with the Epilepsy Foundation of Big Bend, talking to them about what Pilots do. At our September 13th meeting, Sharon Davidson from Elder Care Services, spoke to us about what Pilots can do to help the elderly in Tallahassee. And we had three guests – Judy Taylor and Oriana Pina, Charlotte's guests and Kate Brady, Linda's guest. Jane Parker and I went to the Maclay Anchors Junior Induction Ceremony and breakfast on September 21st. I went back to their lunchtime meeting and spoke with them about the Forget-Me-Not Walk, BrainMinders and working together on projects. Pam wasn't able to attend the first Chiles Anchor meeting on September 22nd, so I went and spoke with them about the Forget-Me-Not Walk and how we can work together. On September 24th, Lynda and I volunteered at The Alzheimer's Project Caregiver's Forum. What a great event that was. The caregiver's had the time and opportunity to relax and treat themselves to a day of pampering.

Several of our members expressed the need for updated status reports on what is listed on our Plans of Work. Therefore, at each meeting, the Chairperson of each event, which is coming up within the next **two months**, gives us a status report on what's going on - sort of like a who, what, where, when, why report. By doing this, we will be reminded of what's coming up and who is responsible for the event. The reports don't need a whole lot of description, just a brief report (not more than two minutes, max). This is an opportunity for the Chairperson to let the members know what they will need help with, etc. This is why, at each meeting, time is taken for each Chairperson to speak about their upcoming event. If it's the committee listed under the Chairperson, someone from the committee will brief our club. Thank you for all that you do.

In Pilot Friendship,
Chaire

**"Coming together is a beginning.
Keeping together is progress.
Working together is success. "**

~ Henry Ford



birthday celebrations!

oct & nov 2010

Oct 18th Pilot!!
Nov 6th Yvonne Salfinger
Nov 7th Annarene Wineglass



don't forget...

Local dues are \$30 per quarter



We raised **\$629.60** since 2007 by just merely searching the web and going shopping! You too can help the Pilot Club of Tallahassee Foundation in a very easy way.

When you click, go through Goodsearch as a search engine (instead of Google) - keep it on your toolbar.

BrainMinders®

Get to know your BrainMinders® characters @
www.pilotinternational.org



HORSE

ALWAYS WEARS HIS GEAR!!

PIF continued from p1...

Submitted by Claire Mikko

- Mabel Breen was a member of the first Board of Trustees and an annual award in her name now goes to the Pilot Club making the largest per capita contribution.
- Lucy B. Allen was the first President of the Charter Pilot Club, the Pilot Club of Macon. Individuals and clubs with \$1,000 in contributions to PIF are members of the Lucy B. Allen Club.

pilot international

Submitted by Claire Mikko



**PILOT INTERNATIONAL
INFORMATION**



Believe it or not, it's not too early to start planning for the July 2011 Pilot International/Pilot International Foundation Conference in Dallas, Texas. The Conference will be held at the Sheraton Dallas Hotel, right across the street from the Convention Center. The nightly room fee is \$139 (single/double), \$159 (triple) and \$199 (quad) plus taxes and the registration is \$250. The dates are July 13 – 17.

florida district

Submitted by Claire Mikko



**EVERYTHING YOU WANTED TO
KNOW ABOUT FALL COUNCIL!**

FLORIDA DISTRICT, PILOT INTERNATIONAL

FALL COUNCIL

November 5, 2010 – November 7, 2010

Ocala Hilton

Ocala, Florida



During the course of this Pilot year, there will be some changes to the Florida District website. It will have more of a Florida look to it and hopefully, be easy for everyone to use and find out important information. The District has also started using *Constant Contact* to send out information to the club presidents and eventually will be expanded to all of the club members. Hopefully, we'll hear more about this at Fall Council.

get to know karol!

by Karol Schneider



LEARNING ABOUT KAROL

An original Tallahassee Lassie, I have lived in Tallahassee all my life, attending elementary school at the "old Sealey" that was located where the Police station is now for 1st through 4th grades (Ruediger for 5th because they tore down the "old Sealey"), Raa Middle School and graduated from Leon High School (Go Lions!) in 1978. I attended FSU before starting my career at Capital City Bank. My husband Rick and I were high school sweethearts, and still sweethearts after all these years. We have one daughter, Rachel, who is 27 and graduated from FSU with a degree in Recreation and Leisure Management, or as we call it, "Play". She works for the Town of Belleair, Florida as a Recreation Programmer. In our time away from work, Rick and I enjoy motorcycle riding, particularly in the western North Carolina mountains. I joined Pilot after Rachel moved away and I was suddenly left with free time, and enjoy the friendship and community service that Pilot is all about.

scholarship house

by Claire Mikko



**PILOT SCHOLARSHIP
HOUSE FOUNDATION**

At our September meeting, Oriana Pina, Head Resident at the LaVerne Weddle Pilot Scholarship House, was one of our guests. She spoke to us about the house and how happy she is to be living there. She invited our members to drop by at any time and reminded us that there will be the Thanksgiving Feast this year, too.

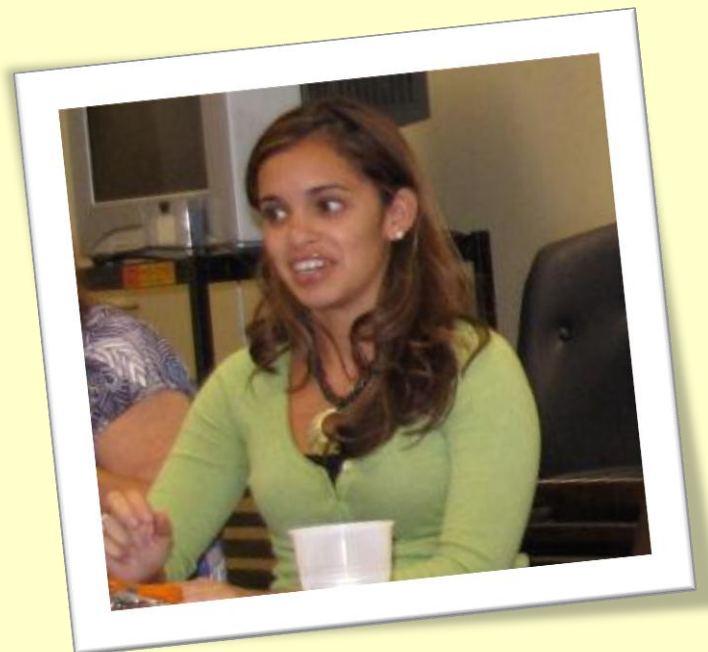


photo gallery

submitted by claire mikko



The Epilepsy Foundation of Big Bend Board
(Scott Mehle, Director, far right)
Presenting \$500 from our club



Sharon Davidson,
Elder Care Services



Natalie
(Anchor President)
and Ms Davey (Advisor)
Maclay



Jane at Maclay Anchor Junior Induction Ceremony



Ms Chason (Advisor) and Louisa (Anchor President)



Junior Anchor Induction Ceremony at Maclay



Claire and Lynda at The Alzheimer's Caregivers Forum



Chiles Anchors